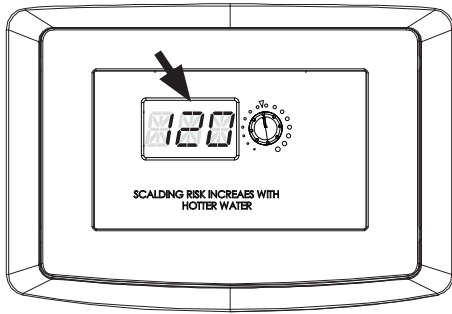


# SUPPLEMENT SHEET FOR RSHE STANDARD MODELS

## Instructions For User Display

A 3-digit display is used to indicate the:

- Status of the water heater
- Software version on the Ignition Control
- Set point of the water heater when the water heater is actively heating
- Active fault(s)



Upon powering on the unit, the software version of the Ignition Control is displayed for 4 seconds. This includes the major and minor versions of software. This is followed by the set point of the water heater based on the position of the control knob on the front panel.

### STARTUP SEQUENCE



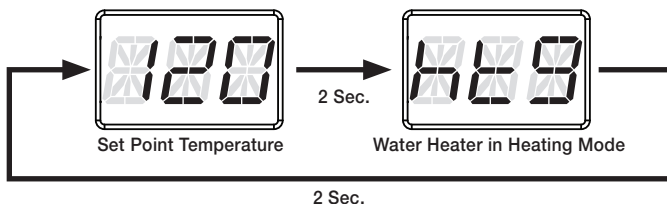
If the unit is not heating, the set point will continue to appear on the display.

Display Sequence while not Heating with no Active Fault(s)



If the unit is heating, the letters “htg” will appear. The display will toggle between ‘htg’ and set-point for 2 seconds each.

Set Point and Heating Indication Sequence (No Faults)



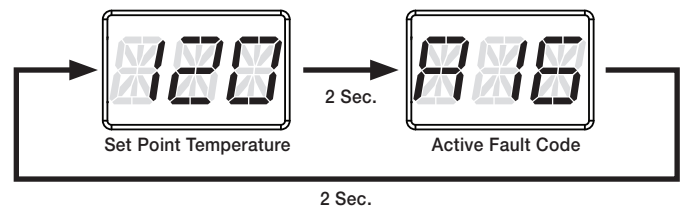
### TIME / TEMPERATURE RELATIONSHIPS IN SCALDS

Water Temperature	Time to Produce Serious Burn
120° F (49°C)	More than 5 minutes
125° F (52°C)	1½ to 2 minutes
130° F (54°C)	About 30 seconds
135° F (57°C)	About 10 seconds
140° F (60°C)	Less than 5 seconds
145° F (63°C)	Less than 3 seconds
150° F (66°C)	About 1½ seconds
155° F (68°C)	About 1 second

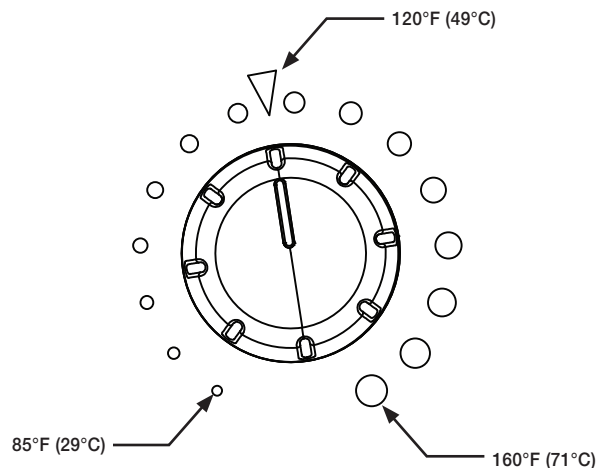
Table courtesy of Shriners Burn Institute

If the unit is not heating while faults are active, the display will toggle between the set point and the active fault(s) in 2 second intervals.

Display Sequence while is not Heating with an Active Fault.



See illustration for set-point temperature and dial position.

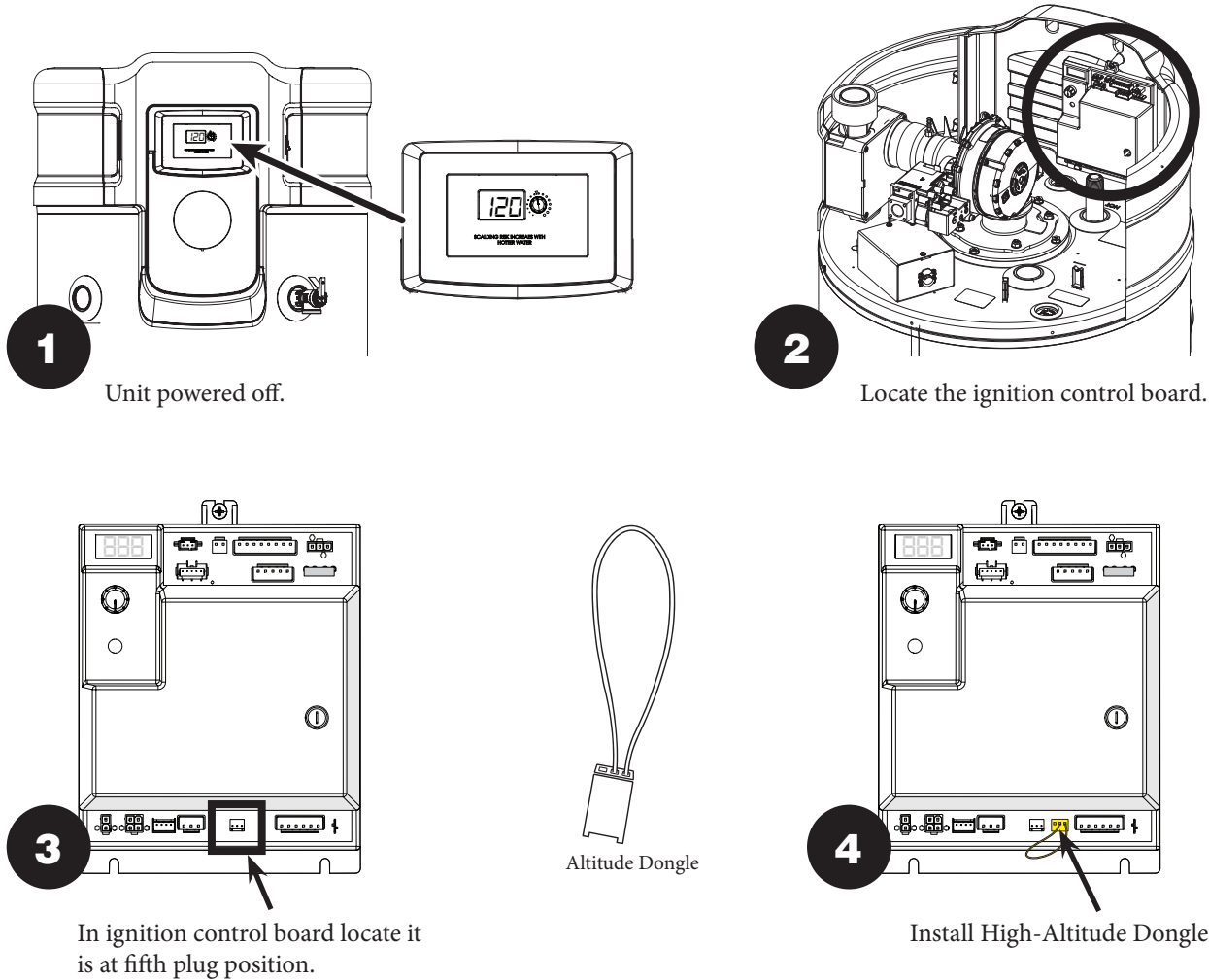


**⚠ WARNING:** Should overheating occur or the gas supply fail to shut off, turn off the manual gas control valve to the appliance.

# HIGH ALTITUDE DONGLE INSTALLATION

When installing in regions where altitude is above 2000 feet above sea level, installation of High-Altitude Dongle is required. Refer HIGH ALTITUDE section from Use and Car Manual for settings.

## High Altitude Dongle Installation



Once power is applied to the water heater:  
Adjust control knob to desired set point temperature  
If any A or T codes appear on the front panel display,  
refer to the U&C Manual

**⚠ WARNING: Ensure jumper is installed in right orientation, so that it is installed properly. As well avoid breakage to pins.**

## GAS AND ELECTRIC ADDITIONAL INSTRUCTIONS

### GAS CONNECTION

Ensure that all gas connections, regulator(s), and meter are sized properly for the BTU/h rating  
Regulator should be a minimum of 8' from the water heater

If installing more than one water heater, make sure each water heater has a regulator

### ELECTRIC CONNECTION

Ensure all electrical connections are secure  
Ensure breaker is sized properly for 7 AMP service per water heater.